

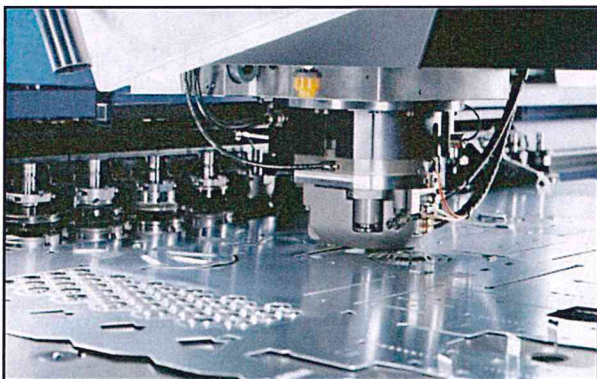
Trumpf 260-T Punch

Capabilities

Tonnage	27 T
Max. Hits per Minute	500 HPM
Min. Width ²	22 5/8
Max Width	100" (without Reposition)
Max Thickness	1/4"
Min. Edge to Punch Center Line ^{3,4}	4 1/16
Tool Stations	25
Min. Center to Center with Dimple	1.5"

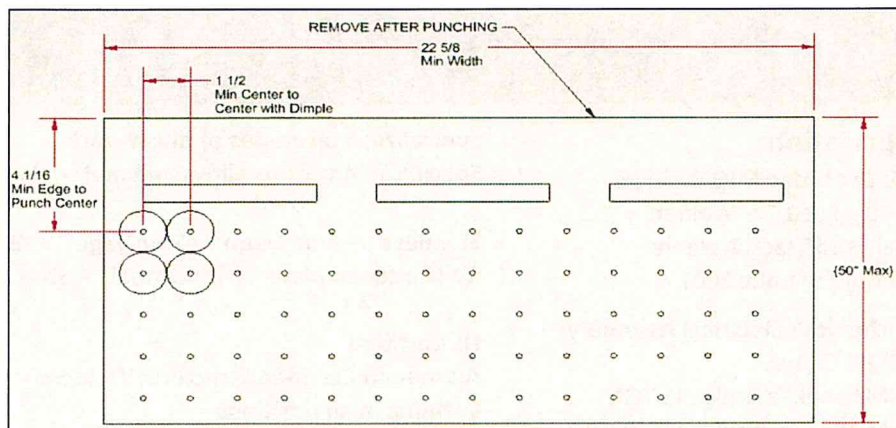
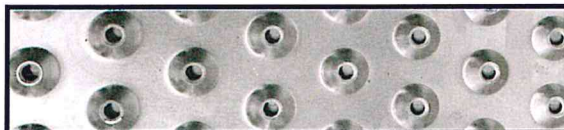
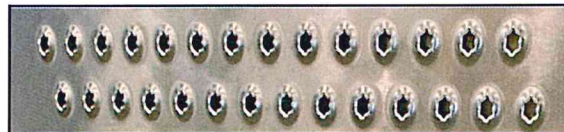
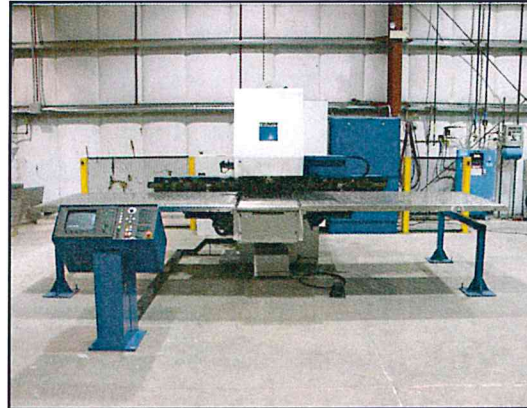
*Many intermediate sizes and other shapes are available. Star, Hexagon, Obround, Special, etc. Check with manufacturing for availability.

5) Minimum distance to center of a punched "dimple" can be from a bend line is 1.75" (10ga max for dimples)



Punch Shapes*

Standard Available Punch Shapes	
Circle	.039" - 2"
Oval	.142" - 1.0"; L 0.203" - 2.0"
Square	0.2" x 0.2"
Rectangle	0.125" x 0.5" - 1" x 2.5"
Dimple	1.5"



GK MACHINE, INC. DONALD, OR

503-678-5525

www.gkmachine.com